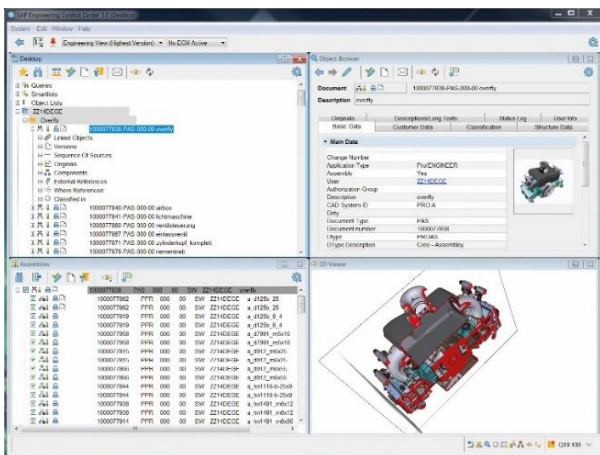


SAP ECTR INTERFACE TO PTC CREO

Product Lifecycle Management
with SAP PLM

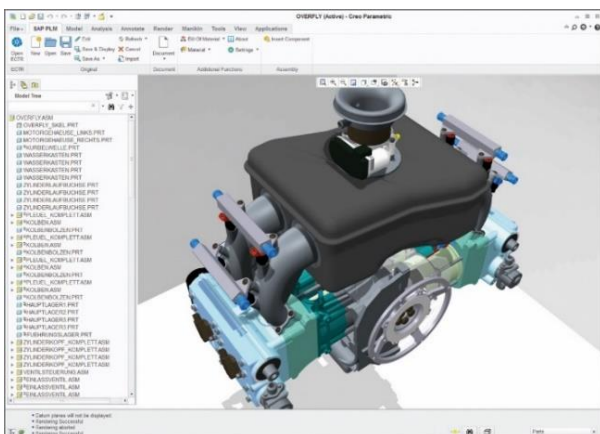
SAP ECTR INTERFACE TO PTC CREO

A key feature of SAP PLM is the availability of powerful integrations for many CAx systems. Combined with the SAP Engineering Control Center interface to PTC Creo, the SAP Engineering Control Center enables the user to manage models, drawings and structures from PTC Creo Parametric and to access all key functions of SAP directly in SAP PLM.



SAP Engineering Control Center user interface

The SAP Engineering Control Center interface to PTC Creo ensures a seamless and uniform integration of the PTC Creo CAD software with SAP PLM without the need to set up and maintain an additional document management system, using the native document management functions of the existing SAP system.



SAP Engineering Control Center interface to PTC
Creo, directly integrated with PTC Creo

FEATURES

- Management of various object types from PTC Creo Parametric (ASM, PRT, DRW, LAY...)
- Management of structures with components and references
- Management of part families
- Support of SAP Visual Enterprise by creating and relaying preview images (thumbnails), viewables and DMU data
- Synchronization of parameters (attributes) between SAP PLM and PTC Creo
- Creation of materials and bills of material (BOMs)
- Direct access to many more SAP functions

YOUR BENEFITS

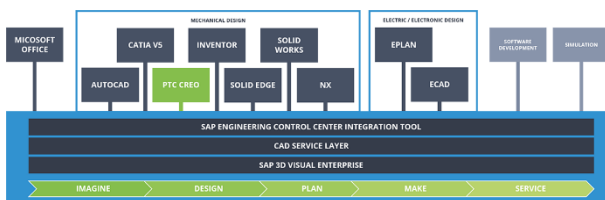
- Integrated management of SAP PLM and SAP ERP product structures
- Non-redundant management of engineering data (metadata and files) in a single system
- Faster access to up-to-date product data, e.g. drawings, throughout the enterprise
- Increase of efficiency in product development by linking drawings and models from PTC Creo with SAP objects, e.g. materials
- Integrated engineering change management and approval processes
- Integration with the business workflow
- Global availability of engineering data with integrated management of permissions and secured access only by authorized users

© 2021 riess engineering gmbh or its affiliated company. All rights reserved. No part of this publication may be reproduced or transmitted in any form or by any means without the express written permission of riess engineering gmbh or its affiliated company. riess engineering, any products or services of riess engineering or its affiliated company mentioned in this publication as well as their respective logos are trademarks or registered trademarks of riess engineering gmbh or its affiliated company. All other names of products or services are trademarks or registered trademarks of their respective owners. See <https://www.riess.de/copyright> for more information on trademarks, copyrights and legal notices.

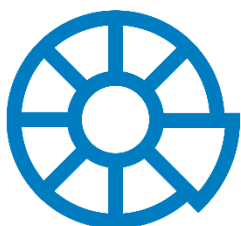
SAP ENGINEERING CONTROL CENTER

Facing the ever increasing variety and complexity of their products, companies manufacture more and more individualized products, even up to custom-tailored lot sizes of 1. These products contain hardware, electronics and software, each developed with a different authoring system. Using SAP Engineering Control Center as a platform enables engineering and development teams to aggregate these diverse data sources to obtain a concise overview of product data, and to complete their tasks faster, more efficiently and successfully.

- Efficiency increases throughout the entire engineering process by means of an intuitive user interface which allows simple and controlled access to product data
- Deployment of a complete and transparent allround view of the product including data from mechanical engineering, electronics engineering, software development and simulation on a single, centralized platform
- The integration of all authoring systems used along the value change with the SAP Business Suite reduces operational costs and minimizes the number of interfaces



SAP Engineering Control Center: A comprehensive platform for the integration of authoring systems



More information on
SAP Engineering
Control Center,
please refer to:
www.sapctr.com

THE IMPORTANCE OF SAP PLM

In the face of growing globalization and a constant demand for reducing product development times, companies require software solutions to enable a consistent flow of information and support the collaboration of users inside and outside the enterprise.

Valuable product data are not only required in collaborative product development but are also used in sales, production planning, manufacturing preparation and order processing, thus accelerating processes while, at the same, time increasing data security. SAP PLM is the perfect answer to these requirements, giving its users secure Internet-based access to all product- and process-related data throughout the entire product life cycle.

DOCUMENT MANAGEMENT IN SAP PLM

A key function of SAP PLM is the management of documents, such as technical drawings, 3-D models, NC programs and text documents. Other functions provided by SAP PLM include automatic versioning, document classification or feature-based search. The status net in SAP PLM describes the path of a document through the enterprise from creation to approval or archival. Individual status nets can be defined for each document type used in the enterprise.

SAP PLM will provide every employee with all documents necessary to perform a task, regardless of their location. Any access to these data is controlled by SAP PLM's flexible and powerful authorization concept.



More information:
riess.de/creo

