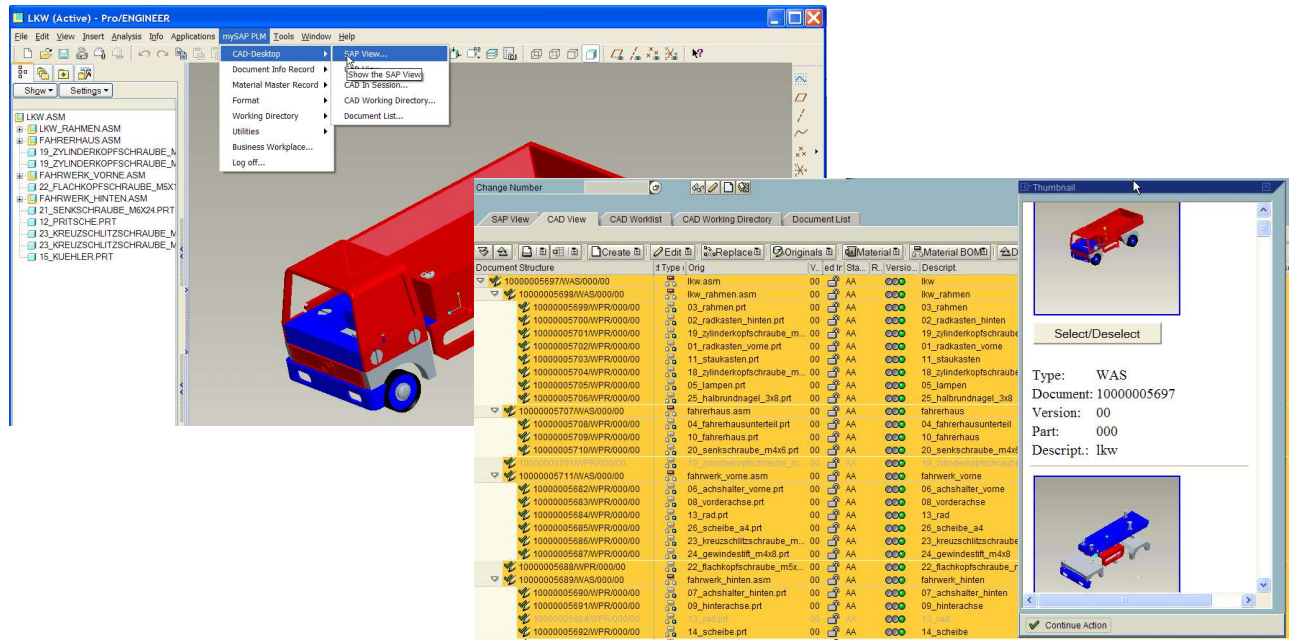




direktintegration\_050630\_eng

# SAP R/3 PLM Direct Integration for Pro/ENGINEER



## Product Lifecycle Management (PLM) with SAP PLM

### What is PLM?

Increasing globalization and an ongoing demand for newer product development cycles entail a need for software solutions that facilitate a continuous flow of information and support collaboration with both internal and external users. When developing a product using collaboration engineering, various divisions need to have access to product data. These departments are, among others, sales, production planning, process planning and order processing. Collaboration along with increased data security enables a speeding up of processes. The afore mentioned demands are perfectly united in SAP PLM. All users of PLM have Internet-based access to all product and process data during the whole product life cycle.

### Managing Documents

One of the main functions of a PLM system is the management of documents such as technical drawings, 3D models, NC programs and text documents. SAP PLM also delivers functionalities for automatic version management, classification of documents as well as a search tool that operates via classification attributes. The status network describes the route of a certain document within a company up to its release or archivation. For any type of document, this network can be tailored to the needs of a company. Thus, every employee can access any and all important documents regardless of time and place. Controlled access to data is ensured through a flexible and highly efficient authorization concept.

### Direct Integration for Pro/ENGINEER

The availability of highly efficient integrations of CAx systems is a crucial feature of PLM systems. The SAP PLM Direct Integration for Pro/ENGINEER enables direct management of Pro/ENGINEER models and structures in SAP and also provides direct access to all important functionalities of the SAP system.

The integration for Pro/ENGINEER ensures seamless, homogeneous integration into Pro/ENGINEER. There is no need for a separate document management-solution since the functionality of the SAP system can be used directly. Users work in their usual SAP environment due to the direct access to standard SAP functionality.



### Functionalities of the direct integration

<ul style="list-style-type: none"> <li>• Management of the most important Pro/E object types (ASM, PRT, DRW, LAY, ...)</li> </ul>	<ul style="list-style-type: none"> <li>• Management of suppressed and ghost objects</li> </ul>
<ul style="list-style-type: none"> <li>• Management of external and internal references</li> </ul>	<ul style="list-style-type: none"> <li>• Creation of thumbnails</li> </ul>
<ul style="list-style-type: none"> <li>• Management of simple or hierarchical family tables</li> </ul>	<ul style="list-style-type: none"> <li>• Transfer of transformation matrices and bounding boxes for DMU</li> </ul>
<ul style="list-style-type: none"> <li>• Management of simplified representations</li> </ul>	<ul style="list-style-type: none"> <li>• Creation of viewing files</li> </ul>
<ul style="list-style-type: none"> <li>• Support of multiple working directories</li> </ul>	<ul style="list-style-type: none"> <li>• Direct access to SAP functionalities, like material search, where-used lists, product structure browser</li> </ul>

### CAD Desktop

Within the SAP system, the CAD desktop is a generic interface that enables convenient management of 3D CAD-structures in the SAP R/3 system. It was developed by SAP in close cooperation with .riess engineering. It's an integral part of each direct integration and ensures an online, synchronous and bidirectional management of the product data.

CAD structures are displayed in a browser that is fully configurable. Thus, the layouts of a large variety of document information such as BOMs, classifications, users, status, links to material etc. stored in the SAP system can be managed.

### Functionalities of the CAD Desktop

<ul style="list-style-type: none"> <li>• Create, assign, or delete Document Info Records (DIR)</li> </ul>	<ul style="list-style-type: none"> <li>• Creation of versions and copies</li> </ul>
<ul style="list-style-type: none"> <li>• Automatic creation of Bill of Documents</li> </ul>	<ul style="list-style-type: none"> <li>• Replace of versions</li> </ul>
<ul style="list-style-type: none"> <li>• CheckIn and CheckOut functions, supported by assistants</li> </ul>	<ul style="list-style-type: none"> <li>• Create or assign material master records</li> </ul>
<ul style="list-style-type: none"> <li>• CheckOut of Pro/E structures with/without drawings, external references and suppressed components</li> </ul>	<ul style="list-style-type: none"> <li>• Creation and update of BOM's</li> </ul>
<ul style="list-style-type: none"> <li>• Status changes for complete structures</li> </ul>	<ul style="list-style-type: none"> <li>• Access to DMU, cFolders and EASY DMS</li> </ul>

### Advantages

- Redundancy free management of design data within one system
- Fast and company wide access to the most current product data, like drawings
- Higher efficiency within the product development as Pro/ENGINEER drawings and models can be linked with SAP objects
- Controlled change and release processes
- Worldwide data distribution
- 

### Contact

Wolfgang Schukowski · tel. +49 (0)7202 / 707-401 · wolfgang.schukowski@riess.de

### Address

.riess engineering gmbh · draistr. 10 · D - 76307 karlsbad · germany  
tel. +49 (0)7202 / 707-0 · fax +49 (0)7202 / 707-499  
info@engineering.riess.de · www.riess.de

